

Frontrunner Plus



Internal entrance matting with carpet inserts for maximum moisture removal.



Frontrunner Plus is an absorbent entrance mat specifically designed to not only stop dirt in its tracks, but moisture too.

The mat's aggressive tread pattern scrapes shoes and wheels clean, while heavy-duty absorbent carpet inserts removes and dries any moisture. This reduces cleaning internals, expands the life of your floor finishes and keeps interiors looking stylish for longer. Slip resistant, wheel-proof and heel-proof, Frontrunner Plus is an ideal choice for commercial entrances, especially for businesses and shopping centres with high traffic. Choose from 50 colour and style combinations – you can also add a logo panel for added branding.



Features:



Diamond cut pattern



Two layer open-grid construction



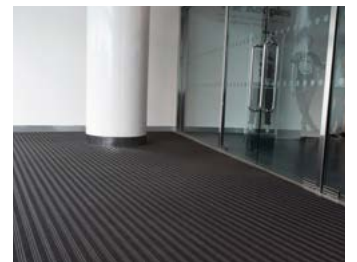
Absorbent carpet inserts



Close mesh grid



Comes in 10m (33') rolls or modules



Benefits:



Slip resistant, high soil removal



Excellent drainage



Maximum moisture removal



Heel-and-wheel proof



Seamless installation



Excel Matting

Barrie Woodcock
barrie@excelmatting.com
07885 769296



UK manufactured matting products

Data sheet

Standard sizes:

Product	Frontrunner Plus	Low Profile
Height	14-16mm (9/16" – 5/8")	10.5-12mm (13/32" - 1/2")
Standard roll options	10 x 0.6m (33' x 2')	10 x 0.6m (33' x 2')
	10 x 0.91m (33' x 3')	10 x 0.91m (33' x 3')
	5 x 1.2m (16'6" x 4')	5 x 1.2m (16'6" x 4')
Standard module option	0.8 x 1.2m (2'7" x 4')	
	1 x 1.5m (3'3" x 4'11")	
	1.1 x 2m (3'7" x 6'7")	
Weight	10.5 kg/m ² (2lbs/sq.ft)	8.7kg/m ² (1.6lbs/sq.ft)

Surface modules are supplied with factory fitted PVC ramped edging to four sides

Tolerances:

	Height (+/- 0.5mm)	Length (0+0.3mm)	Width (0+2mm)
Frontrunner Plus	14/16 mm	10 m	60 cm 91 cm
	14/16 mm	5 m	120 cm
Frontrunner Plus Low Profile	10.5/12 mm	10 m	60 cm 91 cm
	10.5/12 mm	5 m	120 cm

All dimensions are nominal

Colours:



Black



Dark grey



Dark brown



Oxford blue



Green

More colours
available
upon request

Carpets:



Black 608



Dark grey 607



Blue 602



Brown 605



Grey 606



Slate



Basalt



Green



Grey



Sandstone

PVC grid technical information:

Acoustic	Excellent sound absorption
Chemical	Resistant to most acids, alkalines and oils.
Composition	Flexible Polyvinyl Chloride (PVC)
Environment	We don't use any substances included in the SVHC list under REACH in any of our matting products. Phthalate Free.
Fire	Fronrunner Plus: EN ISO 13501-1:2007-Cfl-S1, ASTM E648 – Class 1 Fronrunner Plus Low Profile: EN ISO 13501-1:2007-Cfl-S2
Reversion	Thermoplastic shrinkage can result in size reductions up to 2%. This may be accelerated in hot environments.
Slip resistance	ASTM E303 Dry/Wet with lines along–lines across 72-97 / 65-81
Thermal	Designed to function at temperatures from -23°C and up to +60°C. Slight size variation may occur at temperature extremes.
UV light	Resistant to PVC degradation
Warranty	Fronrunner Plus: three years. Fronrunner Plus Low Profile: two years.

Absorbent inserts (Zeno 600 series) technical information:

Wear classification	EN 1307 - 33, Commercial heavy
Pile material	ECONYL®, 100% regenerated polyamide BCF
Tuft base	100% regenerated non woven polyester Colback™
Phthalate Free backing	Waterproof Comfort™ vinyl
Total height	EN 1765 ± 8.7 mm
Pile height	EN 1766 ± 6.7 mm
Total weight	EN 8543 ± 4260 g/m ²
Pile yarn weight	± 820 g/m ²
Pile density	± 0,127 g/cm ³
Fire	EN ISO 13501-1:2007 Cfl-S1
Suitable for castor chairs	EN 985 A, intensive use r=2.8
Colours	10

Installation:

Fronrunner Plus' one-piece construction means installation is simple:

- Cut to fit on site – no special tools or previous site visits needed
- Integrates with all internal floor coverings
- Fits with different well depths
- Contours to the floor

[Watch](#) or download the [recessed entrance matting installation](#)

Cleaning:

Keeping Fronrunner Plus looking good is easy:

- Reduces cleaning intervals
- Simply roll or lift to clean
- No special tools needed
- Easy to vacuum

[Watch](#) or [download](#) the the cleaning instructions.

Data sheet

Ancillaries:

> For surface mounted installations

PVC edging (H: 14mm, W: 60mm)



Supplied in rolls of 10.1m (33') length with cold welding paste. Comes in black, dark grey, dark brown, holly green, Oxford blue, yellow. Size: 14mm x 60mm x 10.1m (9/16" x 2 1/2" x 33')

PVC edging (H: 14mm, W: 100mm)



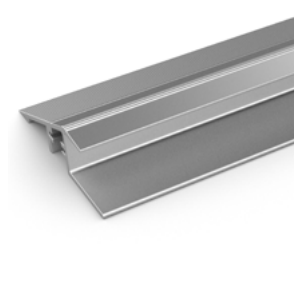
Supplied in rolls of 10.1m (33') length with cold welding paste. Comes in black, dark grey and yellow. Size: 14mm x 100mm x 10.1m (9/16" x 3 3/4" x 33')

PVC snap track (H: 14mm)



Two-part snap track that can be welded together to join rolls end-to-end or side-to-side to cover large areas. Supplied with cold welding paste. Comes in black and dark grey. Size: 14mm x 2.5m (9/16" x 8'2").

Aluminium edging (H: 15mm)



Supplied in sections of 2m (6'6") length with fixing screws and plugs. Comes in anodised aluminium and powder coated yellow. Size: 15mm x 45mm x 2m (9/16" x 1 13/16" x 6'6")

Connector clips: side-to-side (H: 14mm)



For joining sections of low profile matting together side-to-side. Supplied in packs of 10

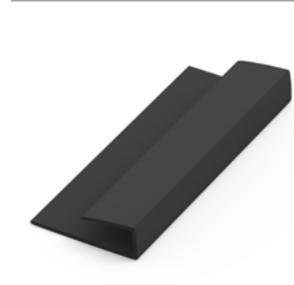
> For recessed installations

R frame (H: 14mm)



You'll need these to secure the matting on the left-to-right edges. Supplied in sections of 3m (10') length with fixing screws and plugs. Comes in anodised aluminium, powder coated dark grey and black. Size: 14mm x 12mm (9/16" x 15/32")

J frame (H: 18mm)



Installing Frontrunner against a wall? You'll need a J frame to secure the matting on the left-to-right edges. Supplied in sections of 3m (10') length with fixing screws and plugs. Comes in dark grey and black. Size: 18mm x 60mm (11/16" x 2 3/8")

Data sheet

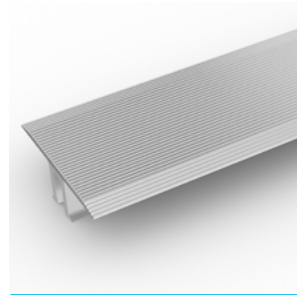
Ancillaries:

T frame (H: 14mm)



You can use a T frame (27mm) to divide the matting into sections left-to-right – this makes it easier to lift and clean. Supplied in sections of 3m (10') length with fixing screws and plugs. Comes in anodised aluminium, powder coated dark grey and black

TL frame (H: 14mm)



You can use a T/L frame (55mm) to divide the matting into sections left-to-right – this makes it easier to lift and clean. Supplied in sections of 3m (10') length with fixing screws and plugs. Comes in anodised aluminium

H section (H: 14mm)



If the front-to-back dimension of the mat well is greater than the final width of your matting, you may need a H section to secure the different sections together. Supplied in sections of 3m (10') length, with fixing screws and plugs. Comes in black, with mat insert colour specified. Size: 14mm x 13mm (9/16" x 1/2")

U section (H: 14mm)



If the front-to-back dimension of the mat well is greater than the final width of your matting, you may need a U section to secure the different sections together. Supplied in sections of 3m (10') length, with fixing screws and plugs. Comes in anodised aluminium, powder coated dark grey and black. Size: 14mm x 19mm (9/16" x 3/4")

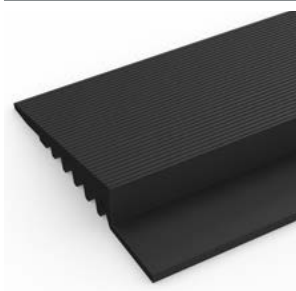
L frame (H: 15mm)



Installing around a circular door or non rectangular space? You'll need a L frame to secure the matting. Size: 15mm x 2.7m length (5/18" x 8')

> For surface mounted installations: Low profile

PVC edging (H: 10mm, W: 50mm)



Supplied in rolls of 10.1m (33') length with cold welding paste. Comes in black and dark grey. Size: 10mm x 50mm x 10.1m (3/8" x 2" x 33')

PVC snap track (H: 10.5mm)



Two-part snap track that can be welded together to join rolls end-to-end or side-to-side to cover large areas. Supplied with cold welding paste. Comes in dark grey. Size: 10.5mm x 2.5m (13/32" x 8'2")

Data sheet

Ancillaries:

Connector clips: side-to-side (H: 10mm)



For joining sections of low profile matting together side-to-side. Supplied in packs of 10

> For recessed installations: Low profile

R frame (H: 10mm)



You'll need these to secure the matting on the left-to-right edges. Supplied in sections of 3m (10') length with fixing screws and plugs. Comes in anodised aluminium, powder coated dark grey and black. Size: 10mm x 12mm (3/8" x 15/32")

U section (H: 10mm)



If the front-to-back dimension of the mat well is greater than the final width of your matting, you may need a U section to secure the different sections together. Supplied in sections of 3m (10') length, with fixing screws and plugs. Comes in anodised aluminium, powder coated dark grey and black. Size: 10mm x 18mm (3/8" x 11/16")

H section (H: 10mm)



If the front-to-back dimension of the mat well is greater than the final width of your matting, you may need a H section to secure the different sections together. Supplied in sections of 3m (10') length, with fixing screws and plugs. Comes in black, with mat insert colour specified. Size: 10mm x 13mm (3/8" x 1/2")

Z frame (H: 10mm)



Installing matting next to ceramic tiles? You'll need a Z frame to secure the matting. Supplied in sections of 3.6m (11') length with fixing screws and plugs. Comes in anodised aluminium, powder coated dark grey and black. Size: 10mm x 24mm (3/8" x 15/16")